

**Unleash  
the Power  
of Clean Energy**



# **WAR HORSE™**

**H Y B R I D & E L E C T R I C 4 X 4**



**MADE IN U.S.A.**

**UTV · SIDE X SIDE CATALOG**





**UNLEASHED POWER!**

## WAR HORSE 4X4 ALL ELECTRIC



A revolutionary ALL ELECTRIC 4X4 is born! Without compromise, the new WAR HORSE is built with the best clean technology and power available. With the most range in its class, this 72 volt UTV allows you to travel over 20+ miles in off-road conditions. It sports the smooth ride of a 4-wheel independent suspension and power to go most anywhere (38 HP - Dual Direct Drive Motors). Built with superior craftsmanship and world class leading technology, the War Horse™ electric 4x4 UTV can get the job done.

## SPECIFICATIONS

1200 LB. VEHICLE CAPACITY

72 VOLT HIGH PERFORMANCE ELECTRIC SYSTEM

4 WHEEL INDEPENDENT SUSPENSION

POWER DUMP BED 35 X 32 X 9 (LXWXH)

MAX RANGE BATTERIES

38 HP DUEL DIRECT DRIVE MOTORS

4 WHEEL HYDRAULIC DISC BRAKES

SEAT BELTS

GROUND CLEARANCE AT DIFFERENTIAL 11" FRONT 14" REAR

DIMENSIONS: 113 X 57 X 76 (LXWXH)

MULTI-FUNCTION DIGITAL DISPLAY (SPEED, DISTANCE, TRIP, TIME)

ON-BOARD CHARGER (110V)

HEAD AND TAIL LIGHTS, BRAKE LIGHTS

SMOOTH RACK AND PINION STEERING

25" PREMIUM 6 PLY TIRES

25 MPH TOP SPEED

2" RECEIVER HITCH

SWITCH ON THE FLY 2WD/4WD

PROTECTIVE SIDE DOORS

1 YEAR FACTORY WARRANTY

MOST POPULAR UPGRADES: ROOF, WINDSHIELD, WINCH, LED GRILL LIGHTS, ROOF BASKET



# DOUBLE ROW COMFORT



## WAR HORSE 4X4 CREW ALL ELECTRIC

**"THIS UTV IS PROFESSIONAL GRADE"**  
JAY NOVACEK  
3 TIME SUPER BOWL CHAMPION



Here is the ultimate way to enjoy the outdoors. Seating for four and room for cargo too - there is no compromise with the clean, silent, scentless power of the War Horse Crew. Sacrificing nothing for the pure quiet power of off road driving is unequaled. Driving this War Horse is experiencing a world of your own.

## SPECIFICATIONS

1500 LB. VEHICLE CAPACITY	MULTI-FUNCTION DIGITAL DISPLAY (SPEED, DISTANCE, TRIP, TIME)
72 VOLT HIGH PERFORMANCE ELECTRIC SYSTEM	ON-BOARD CHARGER (110V)
4 WHEEL INDEPENDENT SUSPENSION	HEAD AND TAIL LIGHTS
POWER DUMP BED 35 X 32 X 9 (LXWXH)	SMOOTH RACK AND PINION STEERING
MAX RANGE BATTERIES	25" PREMIUM 6 PLY TIRES
38 HP DUEL DIRECT DRIVE MOTORS	25 MPH TOP SPEED
4 WHEEL HYDRAULIC BRAKES	2" RECEIVER HITCH
SEAT BELTS	SWITCH ON THE FLY 2WD/4WD
GROUND CLEARANCE AT DIFFERENTIAL 11" FRONT 14" REAR	PROTECTIVE SIDE DOORS
DIMENSIONS: 137 X 57 X 77 (LXWXH)	1 YEAR FACTORY WARRANTY

MOST POPULAR UPGRADES: ROOF, WINDSHIELD, WINCH, LED GRILL LIGHTS, ROOF BASKET





**HYBRID ELECTRIC 4X4**

## WAR HORSE 4X4 HYBRID MAXX

With over 20 miles of all electric off-road driving available, this is the ONLY electric 4x4 that can utilize a gas engine to extend its range past 50 miles. This is the best proven technology available today. The War Horse 4x4 Hybrid Maxx is a bold, yet reaffirming driving experience of power and handling.



## SPECIFICATIONS

1200 LB. VEHICLE CAPACITY	MULTI-FUNCTION DIGITAL DISPLAY (SPEED, DISTANCE, TRIP, TIME)
72 VOLT HIGH PERFORMANCE ELECTRIC SYSTEM	ON-BOARD 460CC GAS ENGINE
4 WHEEL INDEPENDENT SUSPENSION	HEAD AND TAIL LIGHTS, BRAKE LIGHTS
POWER DUMP BED 35 X 32 X 9 (LXWXH)	SMOOTH RACK AND PINION STEERING
MAX RANGE BATTERIES	25" PREMIUM 6 PLY TIRES
38 HP DUEL DIRECT DRIVE MOTORS	25 MPH TOP SPEED
4 WHEEL HYDRAULIC DISC BRAKES	2" RECEIVER HITCH
SEAT BELTS	SWITCH ON THE FLY 2WD/4WD
GROUND CLEARANCE AT DIFFERENTIAL 11" FRONT 14" REAR	PROTECTIVE SIDE DOORS
DIMENSIONS: 113 X 57 X 76 (LXWXH)	1 YEAR FACTORY WARRANTY

**MOST POPULAR UPGRADES: ROOF, WINDSHIELD, WINCH, LED GRILL LIGHTS, ROOF BASKET**





**EXCLUSIVE HYBRID MAXX ELECTRIC  
RANGE EXTENDING TECHNOLOGY**

## WAR HORSE 4X4 HYBRID MAXX CREW

This is hybrid technology that really works. Enjoy the quiet powerful, performance of an all electric 4x4 off-road experience with the gasoline backup to extend range in most off road conditions to over 50 miles. In the still woods - peaceful fields - through a backwoods brook - or hidden oasis, escape to a world of your own.



## SPECIFICATIONS

1500 LB. VEHICLE CAPACITY	MULTI-FUNCTION DIGITAL DISPLAY (SPEED, DISTANCE, TRIP, TIME)
72 VOLT HIGH PERFORMANCE ELECTRIC SYSTEM	ON-BOARD CHARGER (110V)
4 WHEEL INDEPENDENT SUSPENSION	HEAD AND TAIL LIGHTS, BRAKE LIGHTS
POWER DUMP BED 35 X 32 X 9 (LXWXH)	SMOOTH RACK AND PINION STEERING
MAX RANGE BATTERIES	25" PREMIUM 6 PLY TIRES
38 HP DUEL DIRECT DRIVE MOTORS	25 MPH TOP SPEED
4 WHEEL HYDRAULIC DISC BRAKES	2" RECEIVER HITCH
SEAT BELTS	SWITCH ON THE FLY 2WD/4WD
GROUND CLEARANCE AT DIFFERENTIAL 11" FRONT 14" REAR	PROTECTIVE SIDE DOORS
DIMENSIONS: 137 X 57 X 76 (LXWXH)	1 YEAR FACTORY WARRANTY

**MOST POPULAR UPGRADES: ROOF, WINDSHIELD, WINCH, LED GRILL LIGHTS, ROOF BASKET**



# THE **WAR HORSE**<sup>TM</sup> VEHICLES CAN DO IT ALL...



**PARKS**



**COMMERCIAL**



**INDUSTRIAL**



**FARM AND RANCH**

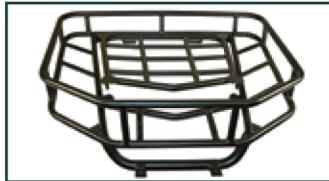


**CONSTRUCTION**



**CARGO**

# ACCESSORIES



**HOOD RACK**

- ▶ Steel Powder Coated
- ▶ Includes Removeable Insert



**WINDSHIELD - GLASS**

- ▶ Dot Approved
- ▶ Tempered Safety Glass



**ROOF TOP**

- ▶ ABS Durable Plastic
- ▶ Available In Black



**ROOF MOUNTED BASKET**

- ▶ Add Additional Storage Up Top
- ▶ 65 lb Capacity



**WINCH**

- ▶ 3500 LB Cable Winch
- ▶ Hand Held In/Out Remote



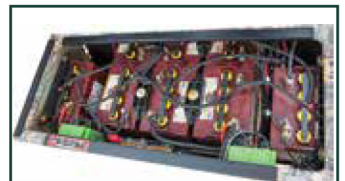
**14" AND 22" LED LIGHT BAR**

- ▶ Available in RGB Color Combo
- ▶ Up To 10,200 Lumens



**BRUSH GUARD**

- ▶ Steel Full Front Grill Protection
- ▶ Powered Coated 1 1/2" Heavy Duty Steel



**SINGLE POINT WATER SYSTEM**

- ▶ Maintain Battery Water Level Efficiently
- ▶ Includes Hand Pump



**STEEL BED COMBO**

- ▶ Folds Down all Three Sides
- ▶ Heavy Duty Steel With Power Dump



**ALUMINUM WHEELS**

- ▶ 12 x 7 Aluminum Wheel Package
- ▶ Comes With 6 Ply Radial Tire



**ROUND LED LIGHTS**

- ▶ 4" 27 Watt Green and White LED Lights



**COLOR OPTIONS**



**MARTEX GLOBAL ENTERPRISE, LLC**  
888.554.5953  
[www.WarHorseVehicles.com](http://www.WarHorseVehicles.com)